

Sostenibilità e logistica urbana:

LE TECNOLOGIE COME FATTORE ABILITANTE

September 18th



Ci siamo resi conto che il nostro sistema di trasporto non è, di fatto, UN sistema. E' un aggregato di "industrie" correlate che operano in stretta prossimità funzionale.



La convergenza di asset fisici e applicazioni ICT richiede un nuovo approccio per gestire infrastrutture e servizi

Smarter Transportation

Leverage information to create visibility across transportation networks and improve operations

Anticipate commuter / company demand to optimize capacity and minimize congestion

Coordinate resources to assure safety and improve the user's experience

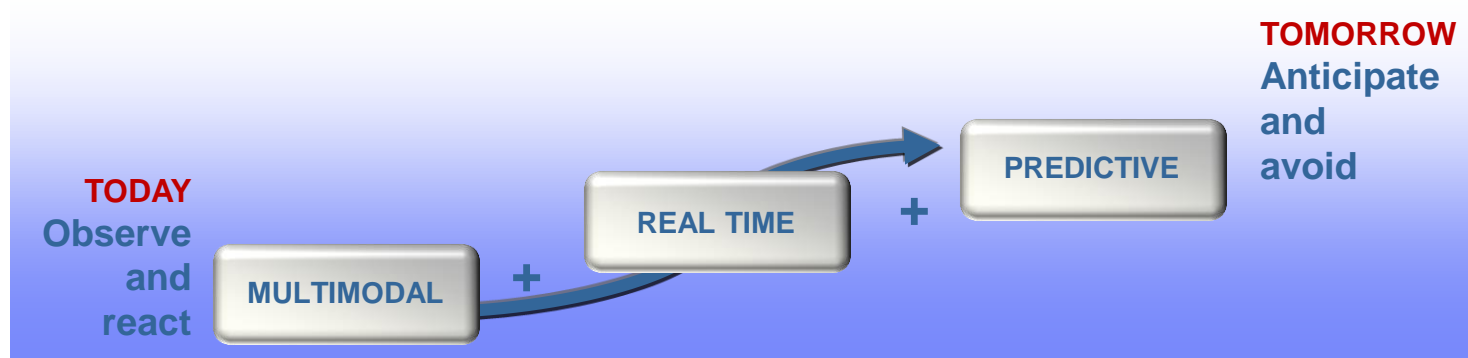


Urban Mobility
Platform

Electric Vehicle
Platform

**Transportation and
Distribution**
Platform

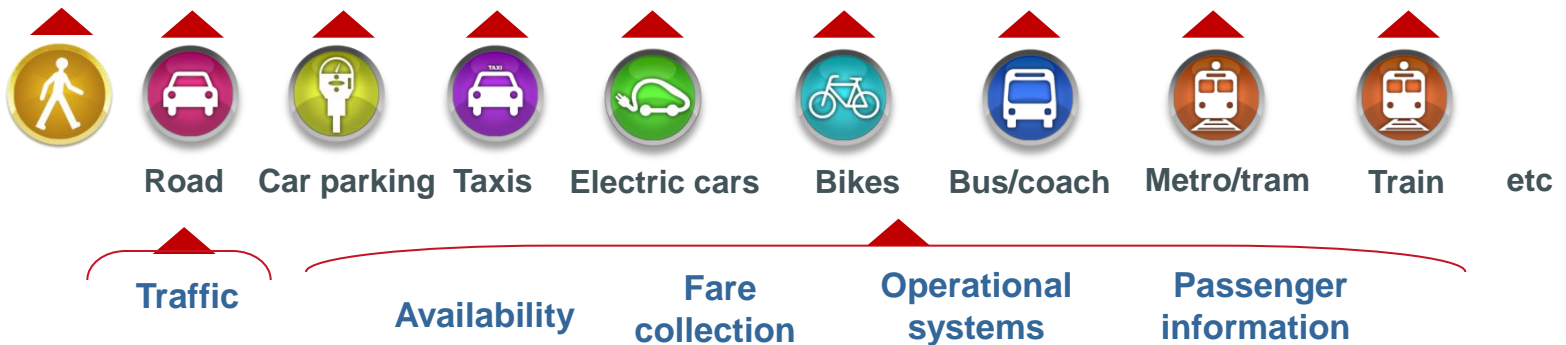
Benefits to citizens and transport authorities



GSM traces
Weather forecast
Security video

Social networks

Real time data integration and processing





■ Lyon

- 2nd urban area in France
- 2.2m inhabitants
- 220 000 cars entering daily
- 58% car trips below 3km
- 30% CO2 emissions related to transport

■ Optimod Project

- 7m€ investment
- 12 partners
- Start April 2012
- Delivery trip planner end 2012

■ Real time data from all modes of transport

- Road traffic
- Car parking
- Shared bikes
- Urban public transport: buses, trams, metro
- Long distance and regional rail
- Inter-city coaches (static data)
- Urban logistics

■ Expected benefits

- reducing car traffic by 8%
- reducing CO2 emissions by 200 000 t/year

■ Optimod Services

- Urban transport operation improvement through 1h traffic prediction and traffic light priority management at 1500 locations
- Multimodal, real time and predictive journey planner
- Personal mobility assistant
- Predictive urban logistics assistant

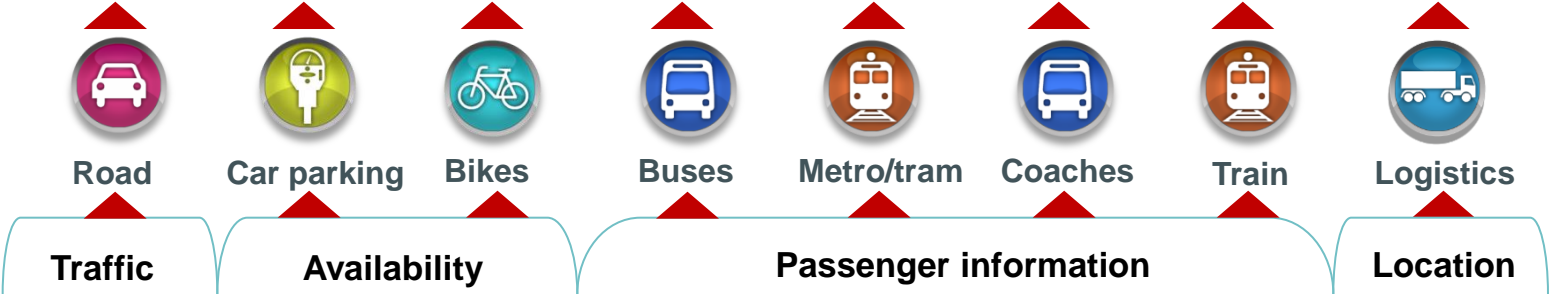
■ Veolia Transdev / IBM solutions

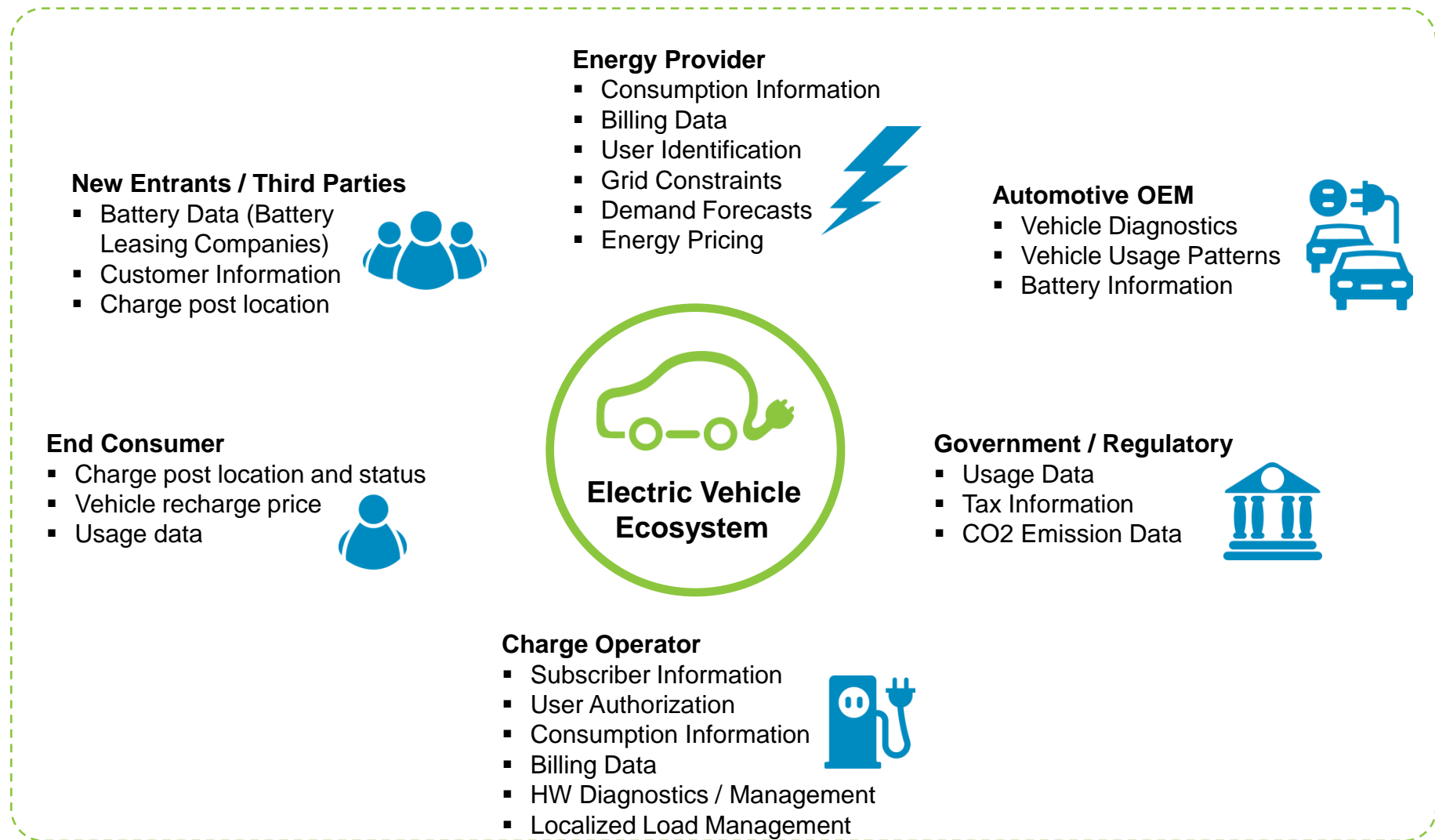
- Integrated real time data base
- Open data platform
- Traffic prediction
- Multimodal real time journey planner
- Mobile personal assistant

8% reduction in car traffic
200 000 CO2 t reduction per year

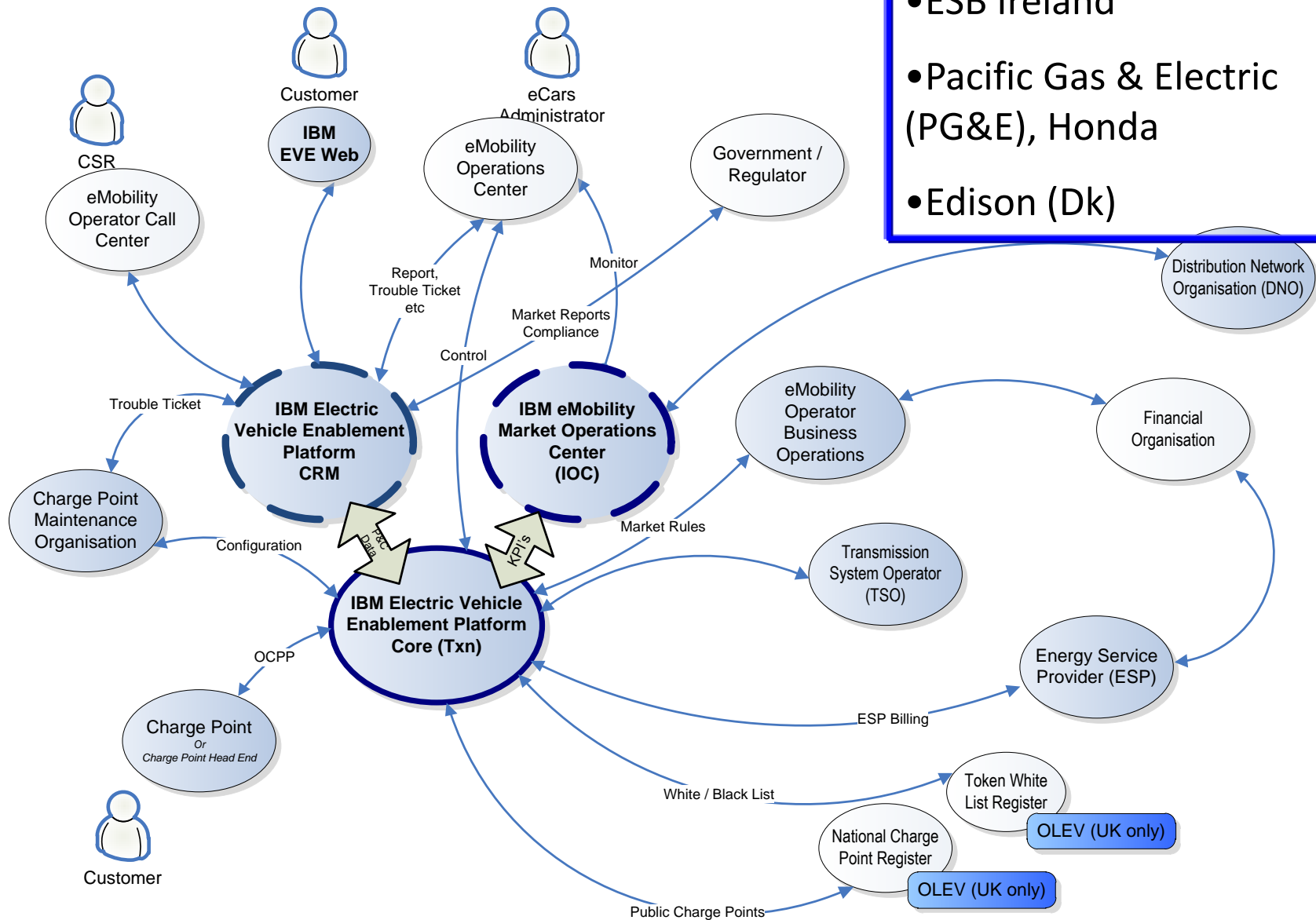


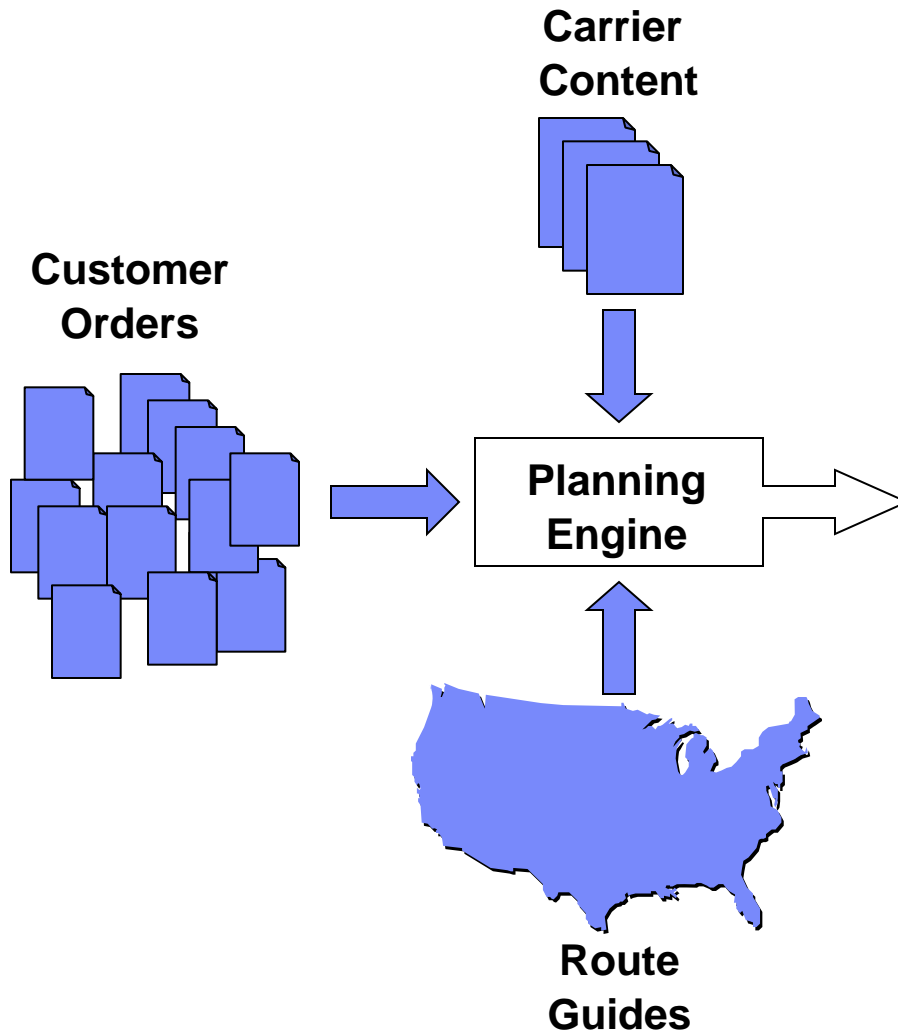
1h traffic prediction
Urban transport optimization through traffic light priority
Multimodal real time predictive journey planner
Mobile personal assistant





- ESB Ireland
- Pacific Gas & Electric (PG&E), Honda
- Edison (Dk)





Optimized Load Plan

Execution

sterlingconnect

Logged in as [BRIAN SHERMAN](#) | [Refresh Page](#) | [No Nav](#) 20-40-40 EST 2006 | [Report Log](#) | [Contract Management](#) | [Flight Planning](#) | [Execution](#)

Load Builder

Shipments

VIEW BY: SHOW ROW LESS: ☐ View:

SEARCH & SELECT

GO

SHIP TO:

DOWN

Type	Number	Plan	Mode	Order	Carrier	Load Plan	Plan Status	Origin	Origin City	Planned Ship	Planned Ship	Destination	Destination City	Destination State	Planned Ship	Planned Ship	Carrier	Weight	Volume
Shipment	SID00001774	-	ORD0131-1U	NO	Truckload	Approved	Unplanned	Near	Tampa, FL	8-Dec-06 12:01 am	8-Dec-06 11:59 pm	Tampa, FL	8-Dec-06 12:01 am	8-Dec-06 11:59 pm	38,500	123 of 8			
Shipment	SID00001797	-	ORD0126-1U	NO	LTL	Unapproved	Unplanned	Near	Tampa, FL	8-Dec-06 12:01 am	8-Dec-06 11:59 pm	Oak Park, IL	8-Dec-06 12:01 am	8-Dec-06 11:59 pm	1,212	960 of 8			
Shipment	SID00001798	-	ORD0128-1U	NO	LTL	Unapproved	Unplanned	Near	Tampa, FL	8-Dec-06 12:01 am	8-Dec-06 11:59 pm	Oak Park, IL	8-Dec-06 12:01 am	8-Dec-06 11:59 pm	2,140	170 of 8			
Shipment	SID00001799	-	ORD0127-1U	NO	LTL	Unapproved	Unplanned	Near	Tampa, FL	8-Dec-06 12:01 am	8-Dec-06 11:59 pm	chicago, IL	8-Dec-06 12:01 am	8-Dec-06 11:59 pm	5,435	216 of 8			
Shipment	SID00001800	-	Multiple	NO	Truckload	Unapproved	Unplanned	Near	Tampa, FL	8-Dec-06 12:01 am	8-Dec-06 11:59 pm	chicago, IL	8-Dec-06 12:01 am	8-Dec-06 11:59 pm	43,361	249 of 8			
Shipment	SID00001801	-	Multiple	NO	Truckload	Unapproved	Unplanned	Near	Tampa, FL	8-Dec-06 12:01 am	8-Dec-06 11:59 pm	chicago, IL	8-Dec-06 12:01 am	8-Dec-06 11:59 pm	11,040	977 of 8			

Customer Table | Export Plans as Rich | Print

Orders

SHIP TO:

DOWN

Order #	Order #	Mode	Plan	Order	Carrier	Load Plan	Plan Status	Origin	Origin City	Planned Ship	Planned Ship	Destination	Destination City	Destination State	Planned Ship	Planned Ship	Carrier	Weight	Volume
ORD0163-1U	Unassigned	Unplanned	Near	ORD0163-1U	Van, SS	NO	Tampa, FL	35601	chicago, IL	8-Dec-06 12:01 am	8-Dec-06 11:59 pm	chicago, IL	8-Dec-06 12:01 am	8-Dec-06 11:59 pm	60601	8,338	81,521.77		
ORD0164-1U	Unassigned	Unplanned	Near	ORD0164-1U	Van, SS	NO	Tampa, FL	35601	Oak Park, IL	8-Dec-06 12:01 am	8-Dec-06 11:59 pm	Oak Park, IL	8-Dec-06 12:01 am	8-Dec-06 11:59 pm	60453	8,329	81,185.08		
ORD0167-1U	Unassigned	Unplanned	Near	ORD0167-1U	Van, SS	NO	Tampa, FL	35601	Oak Park, IL	8-Dec-06 12:01 am	8-Dec-06 11:59 pm	Oak Park, IL	8-Dec-06 12:01 am	8-Dec-06 11:59 pm	60453	8,329	81,185.08		
ORD0166-1U	Unassigned	Unplanned	Near	ORD0166-1U	Van, SS	NO	Tampa, FL	35601	chicago, IL	8-Dec-06 12:01 am	8-Dec-06 11:59 pm	chicago, IL	8-Dec-06 12:01 am	8-Dec-06 11:59 pm	60601	8,329	81,185.08		

Customer Table | Export Plans as Rich | Print

- Carrier Community of +10,000 Carriers
- LTL Carriers
- Intermodal: Truck, Air, Ocean and Rail Networks
- Parcel & 3PLs
- Supplier Portal to SCN

